



**GALLERIA
PARK**



5251 & 5333 | WESTHEIMER

A close-up photograph of several oak leaves with deeply lobed edges, bathed in bright sunlight. The leaves are a vibrant yellow-green color, with some areas appearing almost white due to the intensity of the light. The background is a soft, out-of-focus green, suggesting a dense forest or park setting. The overall mood is bright, fresh, and natural.

Gateway to **THE GALLERIA**



Galleria Park offers a unique park-like setting in an urban corporate campus.

At Galleria Park in Houston, work and life come together beautifully in this vibrant, mixed-use corporate campus. Boasting two completely renovated Class-A office towers, a stunning one-acre Grand Lawn and dozens of shops and restaurants on-site and within walking distance, this Galleria Uptown oasis offers the perfect setting for doing business the right way.



the **GRAND LAWN**

- One full acre of natural beauty designed to give people a place to relax and recharge
- WiFi-enabled with promenades and pavilions
- 10,000 SF of recreation and event space
- Ground-level retail and restaurants with patio seating
- Tenant outdoor activities include ping pong tables and cornhole
- Sprawling native landscaping with live oaks and rich, green grass
- Sculptural exterior garage elevator clad in wood and staggered LED lighting















GALLERIA PARK

- ◆ \$15M renovation completed in 2018
- ◆ Unobstructed views with floor to ceiling windows
- ◆ On-site management and 24-hour security
- ◆ Underground garage access with ample 3.5/1,000 parking ratio
- ◆ Monument and building signage opportunities available
- ◆ Surrounded by shops and restaurants and just a short drive from major interstates, the access is simply unparalleled







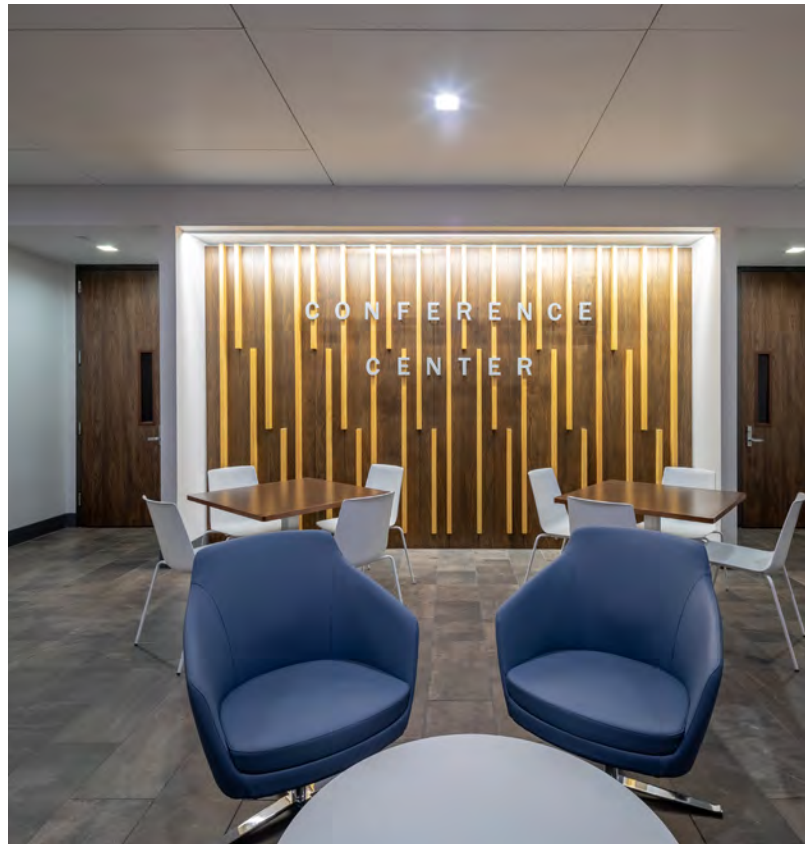
FIRST CLASS AMENITIES

- P.F. Chang's located in Galleria Park I with outdoor covered patio
- New luxury, 2,000 SF conference facility, with boardroom and classroom style seating options
- Pre-function/tenant lounge with upscale seating
- State-of-the-art fitness center with free weights and cardio machines
- Spa-quality, full-service locker rooms











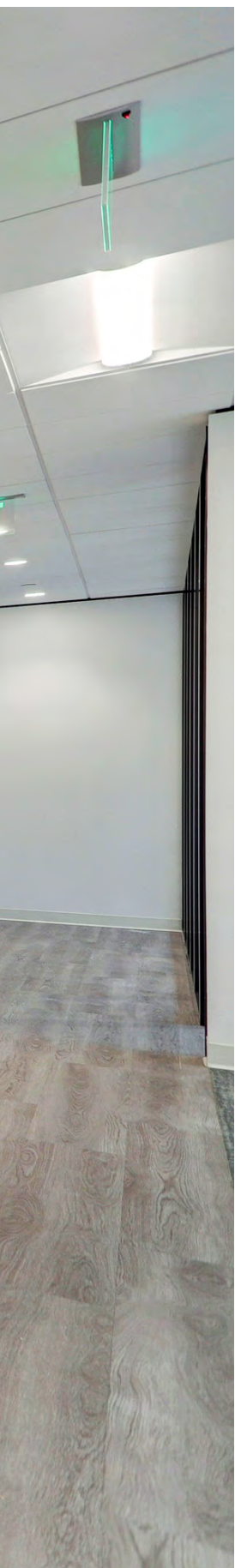
MOVE-IN READY

- Move-in ready spec suites ranging from 2,100 - 2,700 RSF
- Custom designed elevated finishes and lighting
- Up to 97,950 SF contiguous space available in Galleria Park I
- Up to 64,762 SF contiguous space available in Galleria Park I









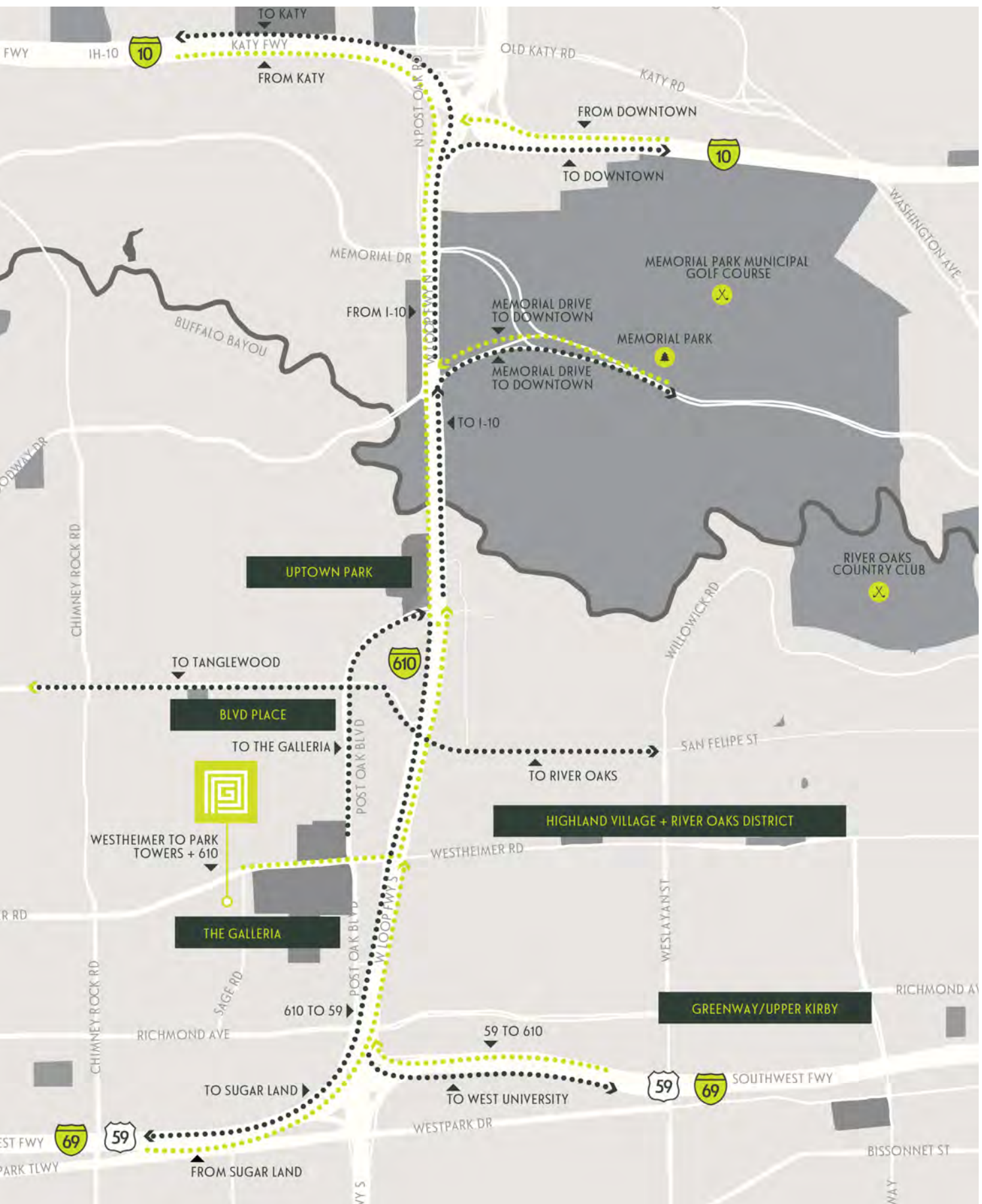


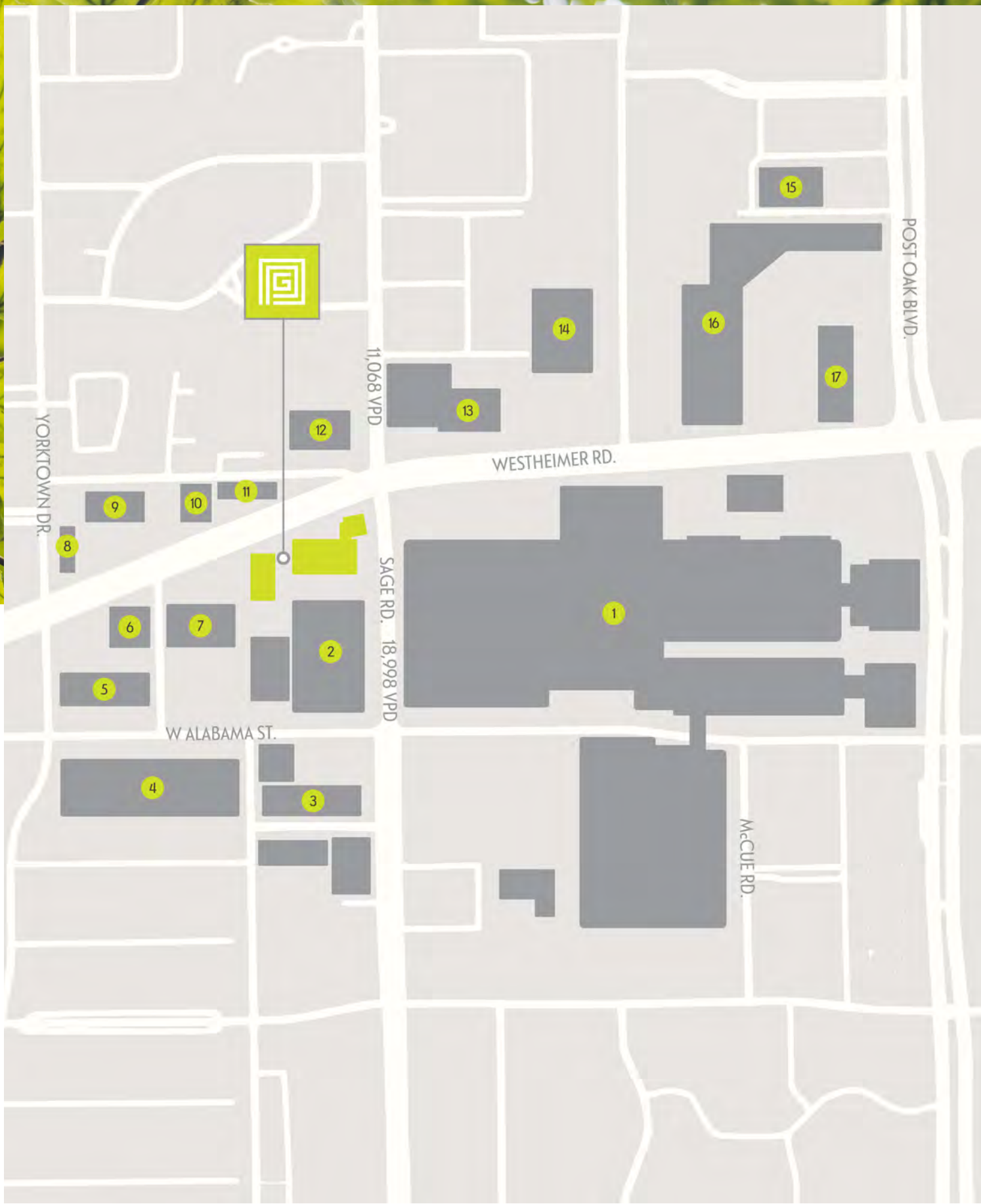
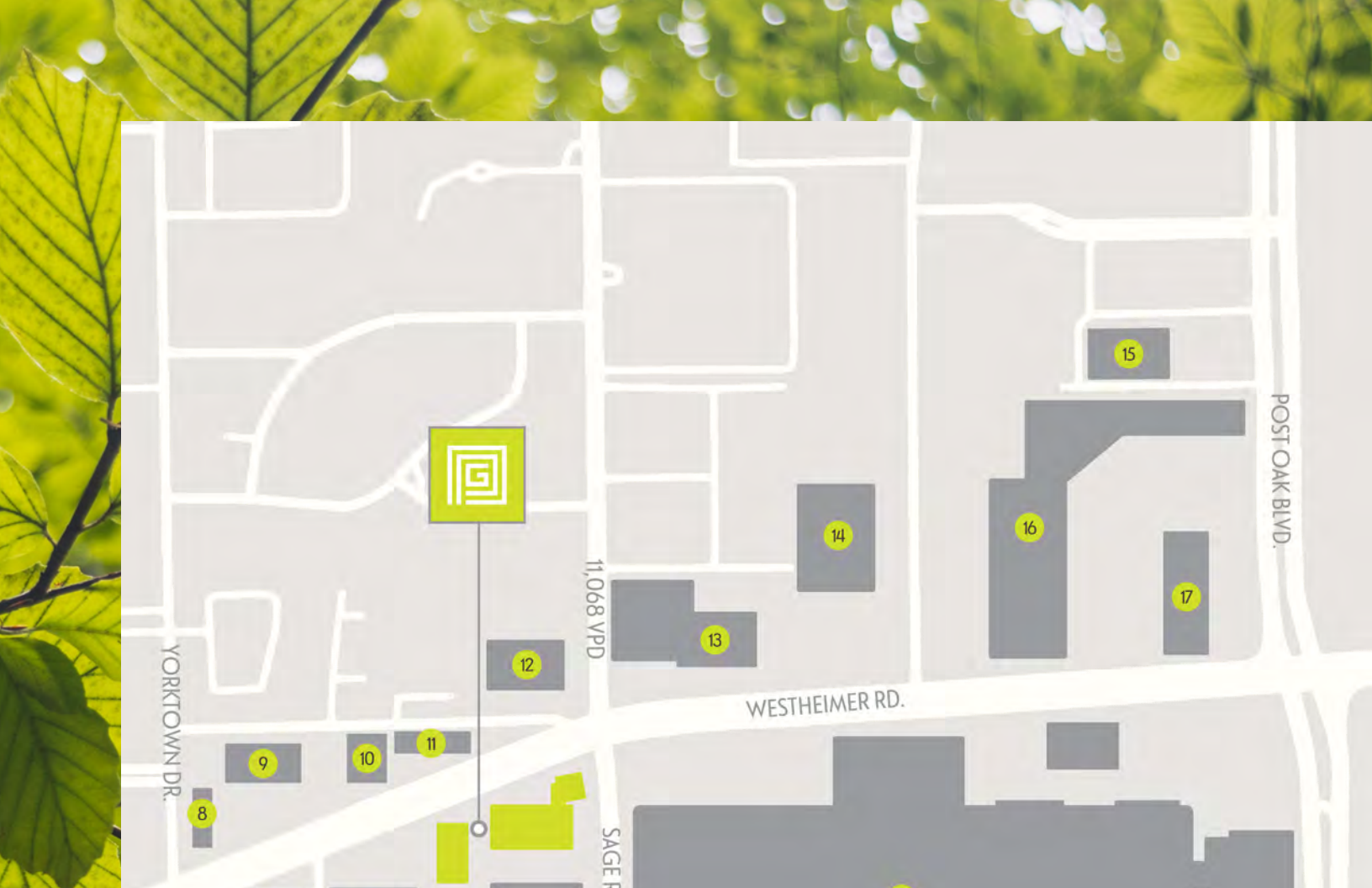
PRIME LOCATION

Just minutes away.

- **1 MINUTE**
WALK TO THE GALLERIA
- **3 MINUTE**
DRIVE TO BLVD PLACE
- **3 MINUTE**
DRIVE TO UPTOWN PARK
- **5 MINUTE**
DRIVE TO RIVER OAKS DISTRICT
- **10 MINUTE**
DRIVE TO MEMORIAL PARK







YOU CAN HAVE IT ALL AT GALLERIA PARK

Explore the area.

104+
RESTAURANTS

40+
HOTELS



WALKABLE AMENITIES



LIMITLESS LUNCH OPTIONS



PRIME RESIDENTIAL &
COMMERCIAL HOTSPOTS

- | | | |
|--|--------------------|--|
| 1 THE GALLERIA | 7 DOUBLE TREE | 14 RESIDENCE INN |
| 2 HYATT REGENCY | 8 THE WEST END | 15 CARACOL |
| 3 SAGE 400
CASA DO BRASIL
THE BURGER PLACE | 9 TRULUCK'S | 16 MOXIE'S
GRAND LUX CAFE
ARHAUS
MATTRESS FIRM
OLD NAVY
ETHAN ALLEN
NORDSTROM RACK
RELAX THE BACK
CARTER'S |
| 4 HIDDEN OMAKASE
BURGER-CHAN | 10 BANK OF AMERICA | |
| 5 EDWIN WATTS GOLF | 11 FIRESTONE | |
| 6 THE CAPITAL GRILLE | 12 WALGREENS | |
| | 13 JW MARRIOTT | 17 MORTON'S
SNOOZE |



GALLERIAPARKHOUSTON.COM



FOR LEASING INFORMATION
713.744.7400 | www.lee-associates.com